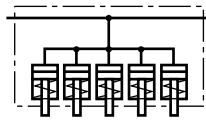


Clamping bar with press-in pistons single-acting, with spring return



HILMA



Applications:

- stationary installed on press beds and rams
- on machines and equipment for clamping and locking
- clamping force up to 35 kN, piston stroke 6 mm

Function:

The clamping bar is mounted on the press bed or ram using a spacer ledge. Clamping is carried out on the die clamping edge by applying hydraulic pressure to the 5 pistons which are arranged side by side with mechanical unclamping by a spring return. Hydraulic oil is supplied through G $\frac{1}{4}$ ports provided on both sides. Flat design with die inlet chamfers. Clamping force up to 35 kN uniformly distributed over 5 pistons.

When using several clamping bars in a row, the elements are interconnected by means of hoses or pipes.

Special features:

- ◇ piston stroke 6 mm
- ◇ very flat and compact design
- ◇ the full length of the stroke may be used
- ◇ easy fastening
- ◇ suitable for retrofit



Clamping bars installed in press bed and ram.
Easy loading of dies using die change consoles and lateral guide rollers.

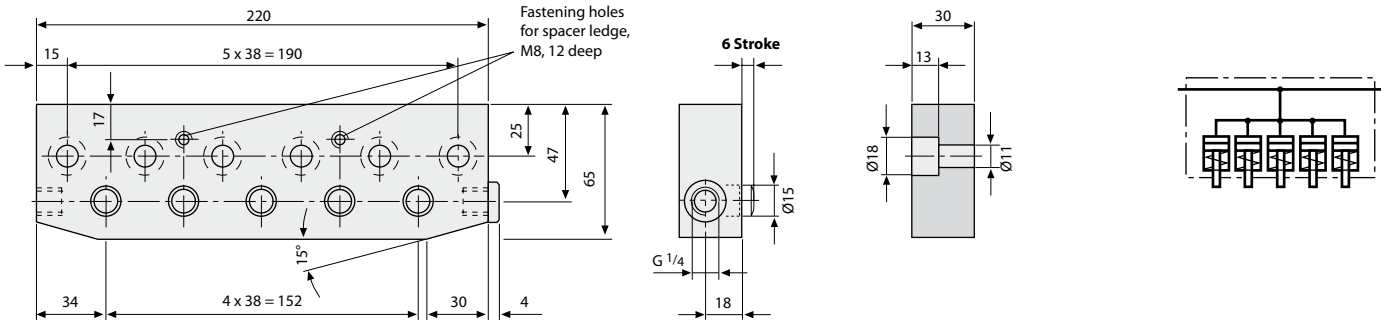


HILMA



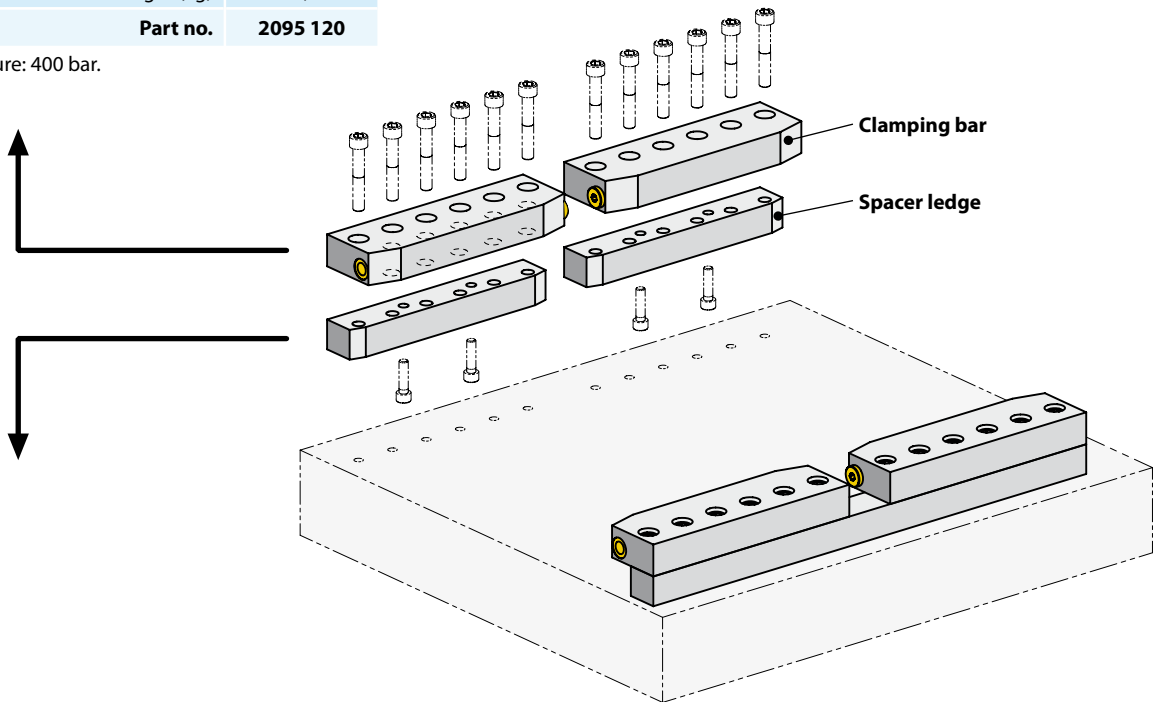
Clamping bar with press-in piston single-acting with spring return

Clamping bar



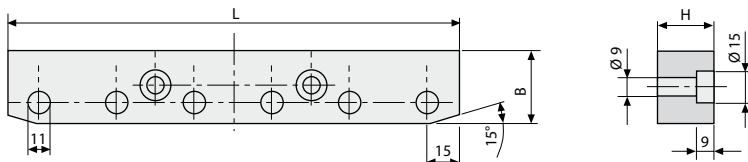
Clamping force at 400 bar (kN)	35,0
100 bar (kN)	8,7
Stroke (mm)	6,0
Oil consumption (cm ³)	5,3
Number of pistons	5,0
Piston Ø (mm)	15,0
Weight (kg)	3,2
Part no.	2095 120

Max. operating pressure: 400 bar.



Spacer ledge

for obtaining the required clamping edge height



Length L (mm)	220	220
Width B (mm)	35	35
Height H (mm)	28	43
for clamping edge (mm)	25 ±1,5	40 ±1,5
Part no.	5.2071.0040	5.2071.0071

Other clamping edge heights H are available on request.

2.2095

10/2008

Hilma-Römheld GmbH

Schützenstraße 74 · D-57271 Hilchenbach

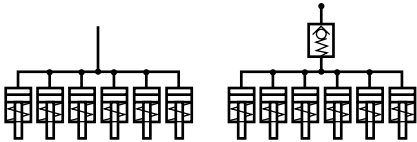
Phone +49 (0) 2733 / 281-0 · Fax +49 (0) 2733 / 281-113 · www.hilma.de

Subject to technical modification

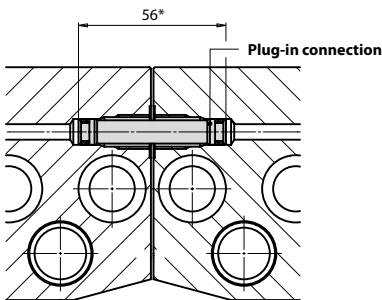
Clamping bar with built-in piston single-acting with spring return



HILMA



Plug-in connection
for clamping bars arranged in series
Part no. 8.0530.0040



*Other dimensions / spacings on request

Applications:

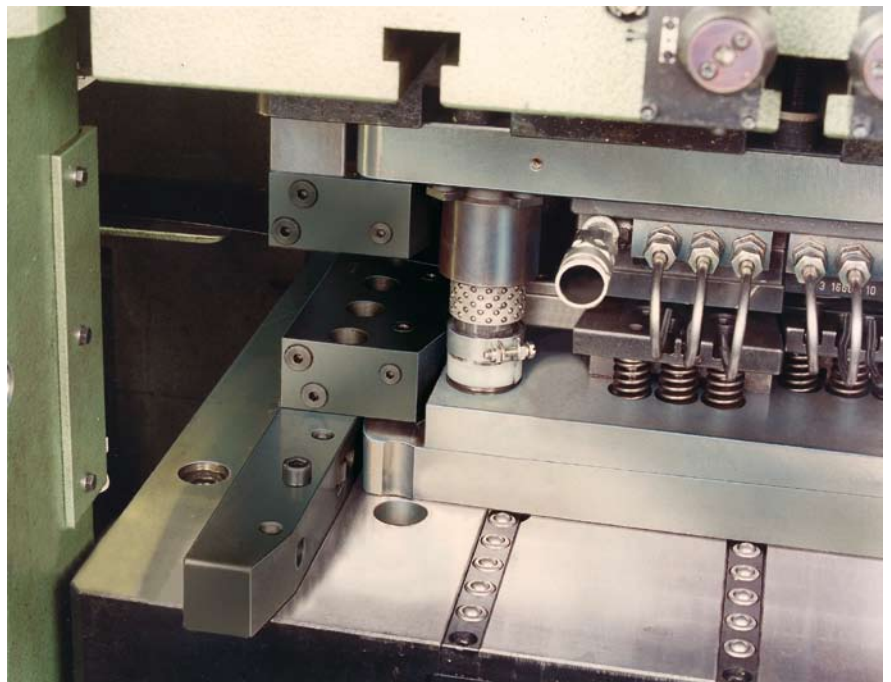
- stationary installed on press beds and rams
- on machines and equipment for clamping and locking
- clamping force up to 116 kN, piston stroke 8 mm

Function:

The clamping bar is mounted on the press bed or ram using a spacer ledge. Clamping on the die clamping edge by applying hydraulic pressure to the 2, 3 or 6 pistons which are arranged side by side, mechanical unclamping by a spring return. Hydraulic oil is supplied through G $\frac{1}{4}$ ports provided on both sides. Flat design with die inlet chamfers. When using several clamping bars in a row, the elements are interconnected by means of hoses or pipes.

Special features:

- ◇ piston stroke 8 mm
- ◇ design with or without check valve
- ◇ flat and compact design
- ◇ stroke limitation fully utilisable
- ◇ easy fastening
- ◇ suitable for retrofit



Retrofit of a double-column press.
Easy loading of dies using chamfered
spacer ledges and ball bars.

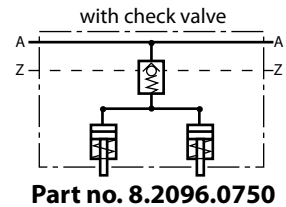
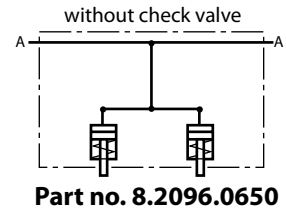
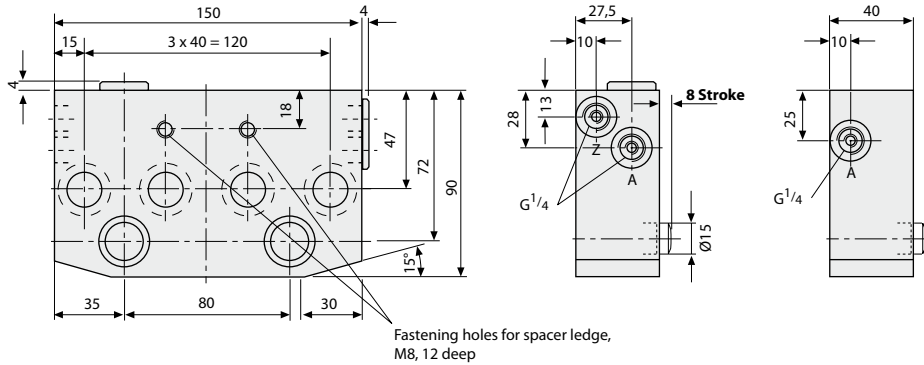


HILMA

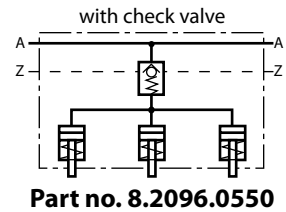
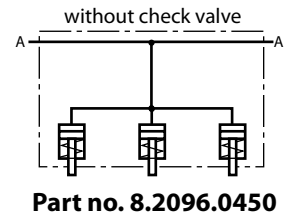
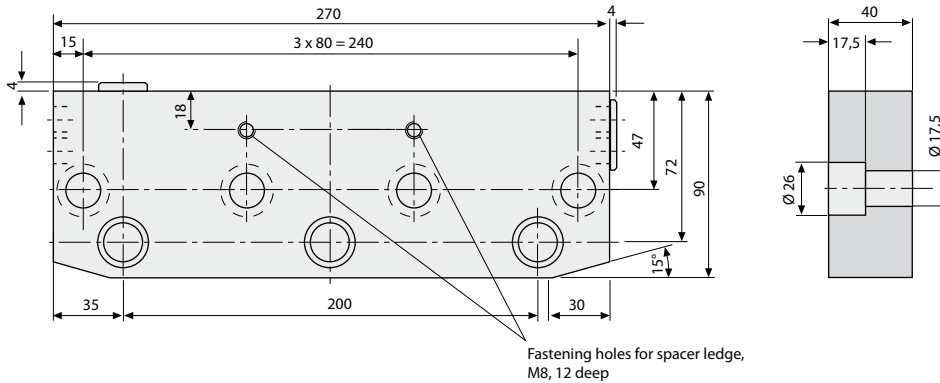


Clamping bar with built-in piston single-acting with spring return

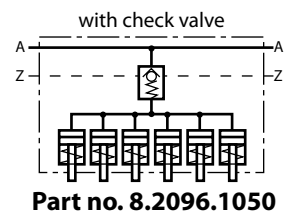
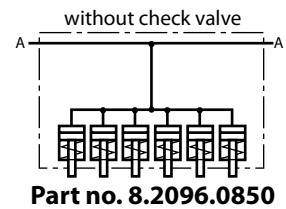
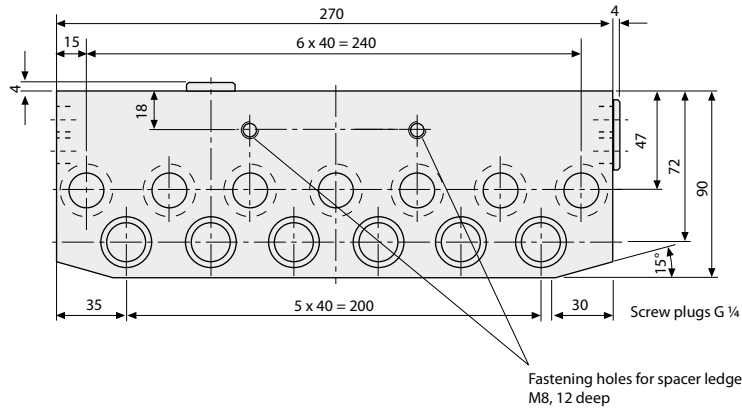
Clamping force 38.6 kN with 400 bar, weight 3.9 kg



Clamping force 58 kN with 400 bar, weight 6.9 kg

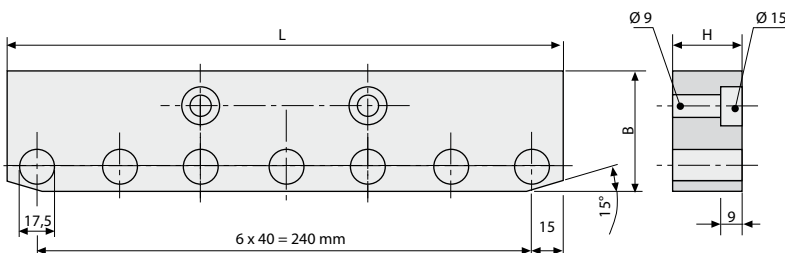


Clamping force 116 kN with 400 bar, weight 7.2 kg



Spacer ledge

for obtaining the required clamping edge height



Part no.	L (mm)	B (mm)	H (mm)	for clamping edge
5.2071.0024	270	58	28	25 ±1,5
5.2071.0032	270	58	53	50 ±1,5
5.2071.0081	270	58	75	72 ±1,5

Other clamping edge heights H are available on request.

2.2096

10/2008

Hilma-Römheld GmbH

Schützenstraße 74 · D-57271 Hilchenbach

Phone +49 (0) 2733 / 281-0 · Fax +49 (0) 2733 / 281-113 · www.hilma.de

Subject to technical modification