

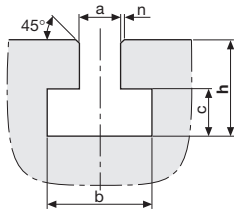


### T-slot tolerances acc. to DIN 650

	a	b	c	h		n
				min.	max.	
18 H8	30 <sup>+2</sup>	12 <sup>+2</sup>	30	36	1,6	
22 H8	37 <sup>+3</sup>	16 <sup>+2</sup>	38	45	1,6	
28 H8	46 <sup>+4</sup>	20 <sup>+2</sup>	48	56	1,6	
36 H8	56 <sup>+4</sup>	25 <sup>+3</sup>	61	71	2,5	

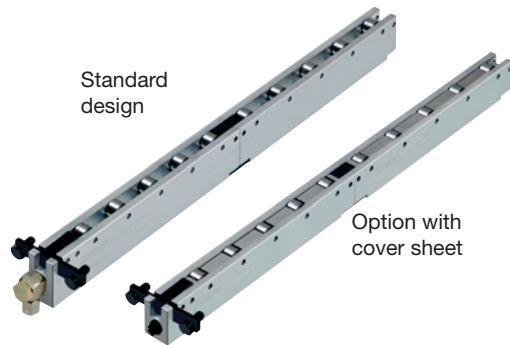
Dimensions in mm

$h_{min.}$  = smallest dimension acc. to DIN 650



### Applications:

- ▶ in T-slots and rectangular slots of press beds for easy die change
- ▶ die change rationalisation



Load : up to 320 kN  
 Length : as per your specification  
 Operating pressure : max. 400 bar

### Roller bar, hydraulically lifted

for high loads and linear movement of dies:

Lifting pistons are fitted to the lower side of the roller bars. These pistons which are pressurised by means of a hydraulic pressure generator raise the roller bar. The die placed on the roller bars is not in contact with the bed plate and can be moved in a linear direction and positioned with effortless ease. The maximum operating pressure is 400 bar. and a low-pressure circuit is not required.

The bodies of the roller bars are made from a high-strength aluminium alloy. They are available in variable lengths.

The bars are easily fastened using the fastening plate.

### Ball bar, hydraulically lifted

for medium loads and flexible horizontal movement of the dies:

The ball inserts are lifted by the application of oil pressure generated by a hydraulic pressure generator. The die placed on the ball bars is not in contact with the bed plate and can be moved very easily.

The maximum operating pressure is 100 bar.

All bars are available in variable lengths.

The bars are easily fastened using the fastening plate or the wedge lock (optional).

### Ball bar with spring pack

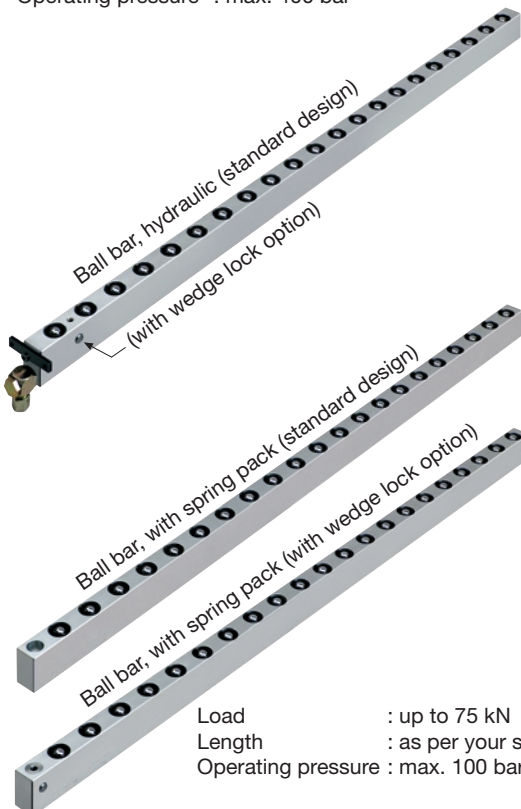
for easy horizontal movement of lightweight dies:

The balls protrude by about 1 mm above the level of the bed. If the die is clamped, the balls are pressed into the bar body by spring power and are flush with the bed surface.

### Ball inserts with spring pack

for installation on presses without T-slots:

The spring-loaded ball inserts are individually inserted in drilled holes. Functioning of the ball inserts is similar to that of ball bars with spring pack.



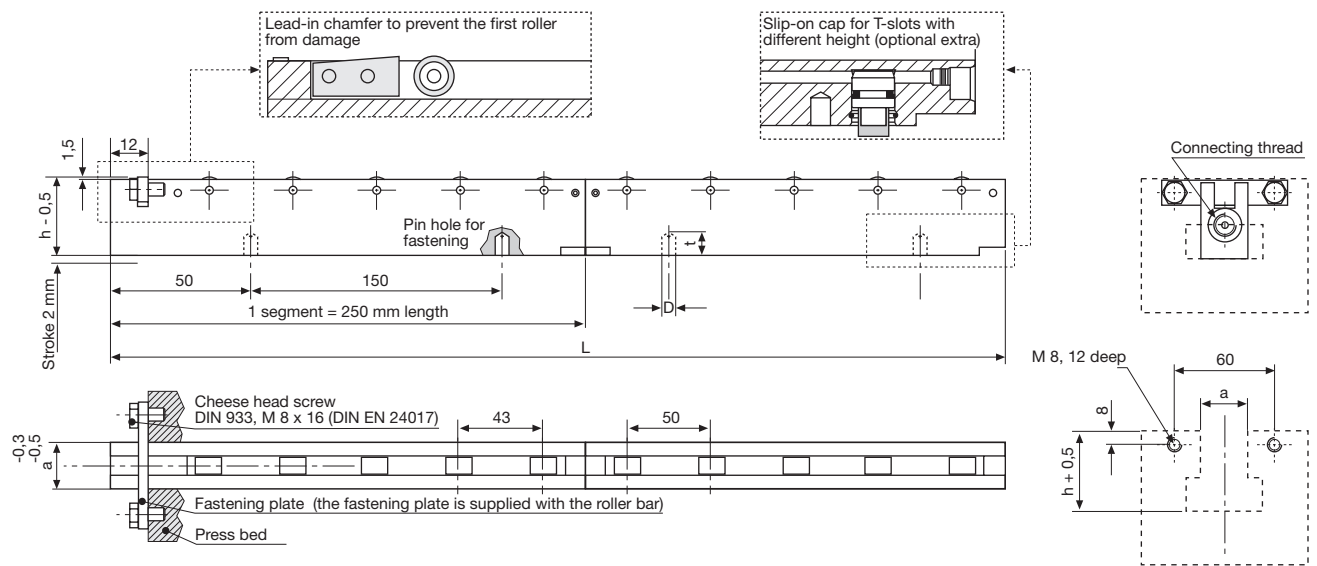
Load : up to 75 kN  
 Length : as per your specification  
 Operating pressure : max. 100 bar



Load : 20 - 100 kg  
 Hole : 20 - 40 mm



## Roller bar, hydraulically lifted (400 bar max.)



Slot (a)	Height (h) (mm)	Max. load/roller (kN)	Number of rollers per segment = 250 mm	Connecting thread	Max. operating pressure (bar)	Roller diameter (mm)	Stroke (mm)	D (mm)	t (mm)
22	38	6,0	5	G 1/8	400	16 x 12	2	6,5	9
28	48	6,4	5	G 1/8	400	16 x 12	2	8,5	12
36	61	8,0	5	G 1/4	400	19 x 12	2	8,5	12

Other heights and lengths are available on request. Max. temperature 100°C.

Part no.	Slot (a) (mm)	Length (L) (mm)	Max. load (kN)
<b>8.1834.5100L250</b>	22	250	30
8.1834.5110L300	22	300	36
8.1834.5110L350	22	350	42
8.1834.5110L400	22	400	48
8.1834.5110L450	22	450	54
<b>8.1834.5110L500</b>	22	500	60
8.1834.5115L550	22	550	66
8.1834.5115L600	22	600	72
8.1834.5115L650	22	650	78
8.1834.5115L700	22	700	84
<b>8.1834.5115L750</b>	22	750	90
8.1834.5120L800	22	800	96
8.1834.5120L850	22	850	102
8.1834.5120L900	22	900	108
<b>8.1834.5120L1000</b>	22	1000	120
8.1834.5130L1100	22	1100	132
<b>8.1834.5130L1250</b>	22	1250	150
8.1834.5140L1350	22	1350	162
<b>8.1834.5140L1500</b>	22	1500	180
8.1834.5150L1750	22	1750	210
<b>8.1834.5160L2000</b>	22	2000	240

Part no.	Slot (a) (mm)	Length (L) (mm)	Max. load (kN)
<b>8.1834.6100L250</b>	28	250	32
8.1834.6110L300	28	300	40
8.1834.6110L350	28	350	48
8.1834.6110L400	28	400	48
8.1834.6110L450	28	450	56
<b>8.1834.6110L500</b>	28	500	64
8.1834.6115L550	28	550	72

Part no.	Slot (a) (mm)	Length (L) (mm)	Max. load (kN)
8.1834.6115L600	28	600	80
8.1834.6115L650	28	650	80
8.1834.6115L700	28	700	88
<b>8.1834.6115L750</b>	28	750	96
8.1834.6120L800	28	800	104
8.1834.6120L850	28	850	112
8.1834.6120L900	28	900	112
<b>8.1834.6120L1000</b>	28	1000	128
8.1834.6130L1100	28	1100	144
<b>8.1834.6130L1250</b>	28	1250	160
8.1834.6140L1350	28	1350	176
<b>8.1834.6140L1500</b>	28	1500	192
<b>8.1834.6150L1750</b>	28	1750	220
<b>8.1834.6160L2000</b>	28	2000	250

Part no.	Slot (a) (mm)	Length (L) (mm)	Max. load (kN)
<b>8.1834.7110L500</b>	36	500	80
8.1834.7115L600	36	600	96
<b>8.1834.7115L750</b>	36	750	120
8.1834.7120L850	36	850	136
8.1834.7120L900	36	900	144
<b>8.1834.7120L1000</b>	36	1000	160
8.1834.7130L1100	36	1100	176
<b>8.1834.7130L1250</b>	36	1250	200
8.1834.7140L1350	36	1350	216
<b>8.1834.7140L1500</b>	36	1500	240
<b>8.1834.7150L1750</b>	36	1750	280
<b>8.1834.7160L2000</b>	36	2000	320

Dimensions printed in bold are the preferred lengths. On request these are available with a steel sheet cover. Fastening plate, short hose 250 mm and angular swivel-type screw fitting are supplied with the bar.